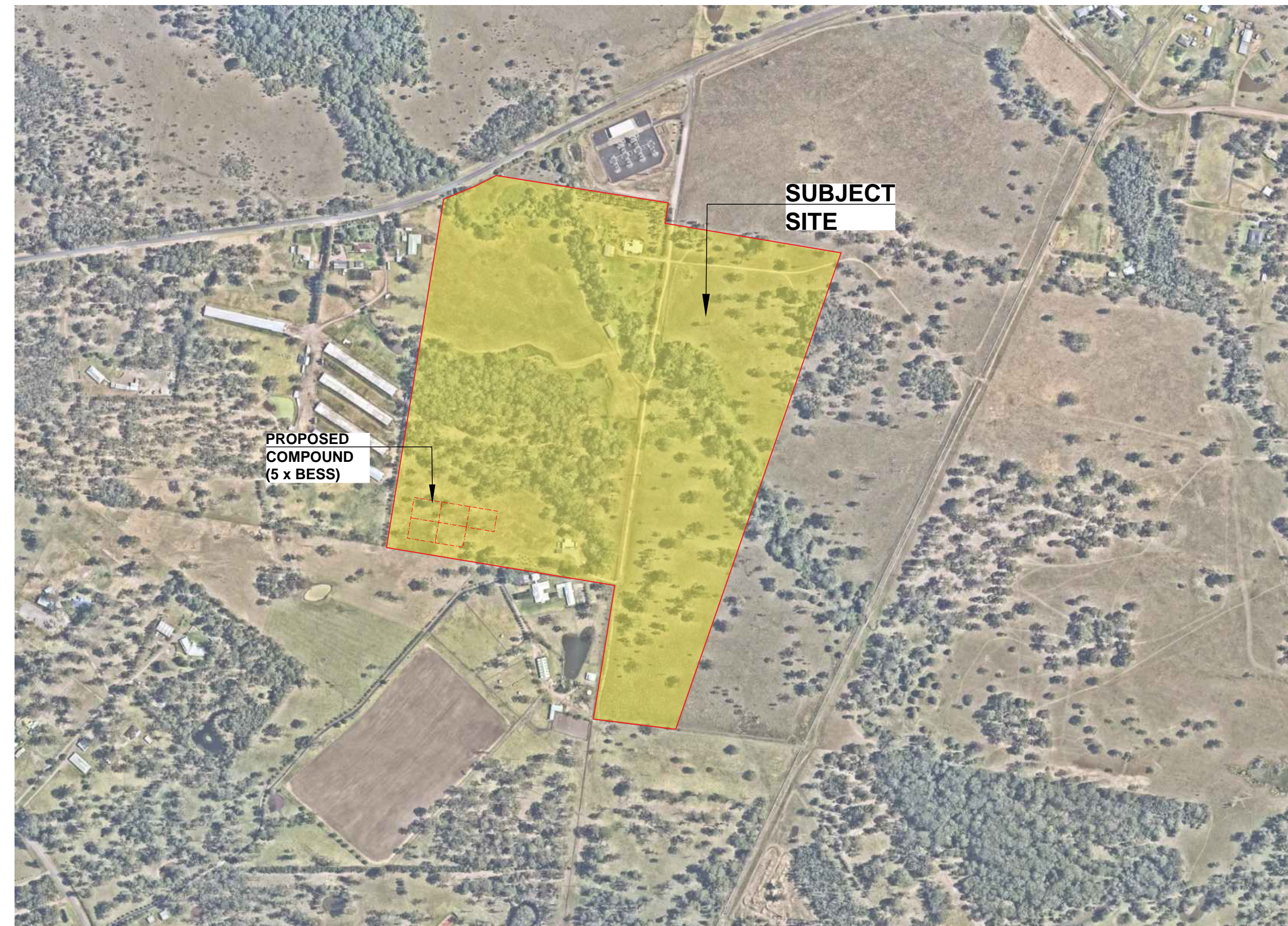


DEVELOPMENT APPLICATION

PROPOSED BATTERY ENERGY STORAGE SYSTEM (BESS)



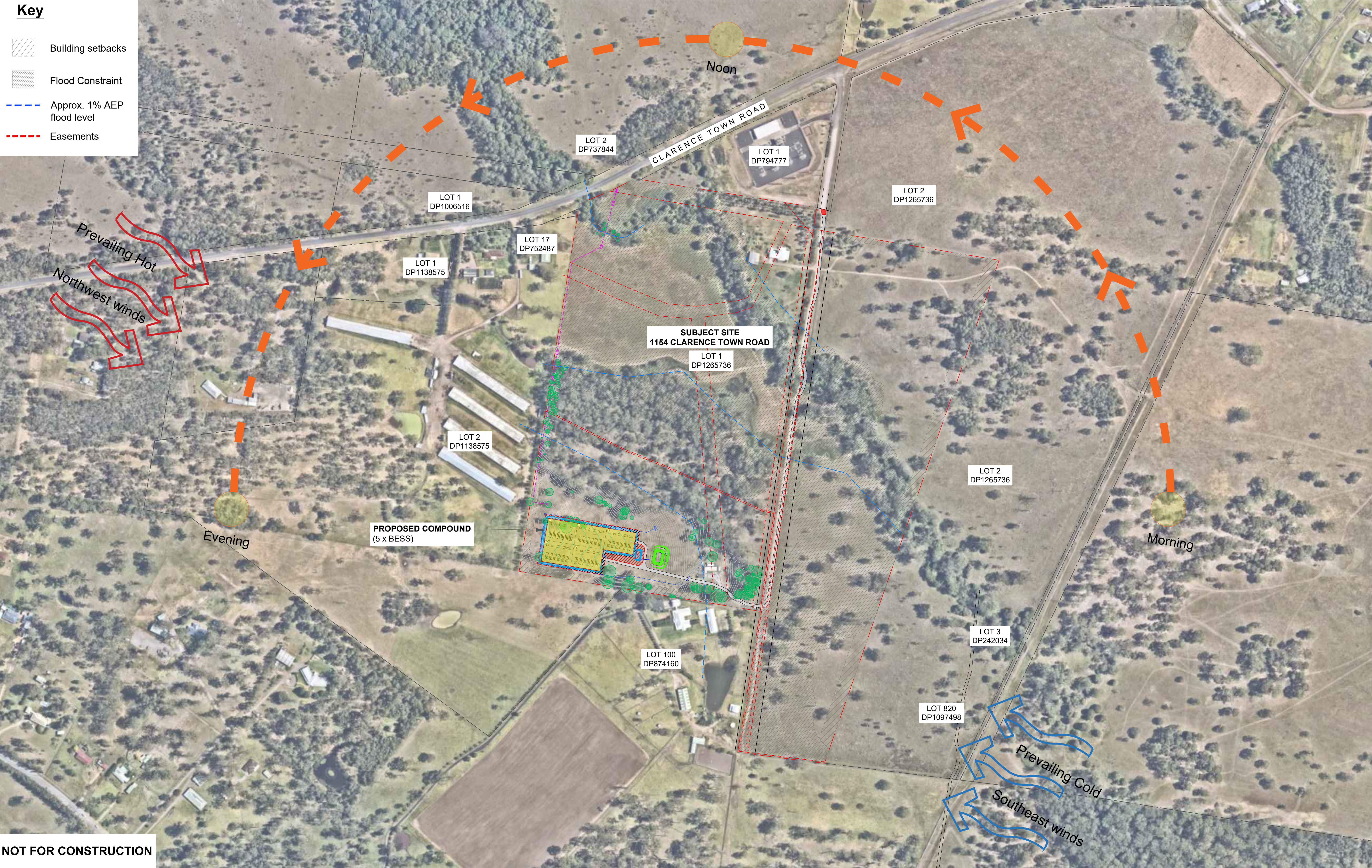
**1154 CLARENCE TOWN ROAD,
SEAHAM**

DRAWING SCHEDULE



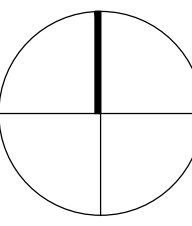
LDA00	COVERSHEET
LDA01	SITE ANALYSIS & CONTEXT
LDA02	LANDSCAPE PLAN (5 x BESS)
LDA03	PLANT SCHEDULE, IMAGES & DETAIL
LDA04	ELEVATION (SOUTHERN) - PLANTING AT 1 & 5 YEARS
LDA05	ELEVATION (EASTERN) - PLANTING AT 1 & 5 YEARS
LDA06	ELEVATIONS (SOUTHERN AND EASTERN) - PLANTING MATURITY
LDA07	VIEWPOINT 1
LDA08	VIEWPOINT 2
LDA09	VIEWPOINT 3
LDA10	VIEWPOINT 4
LDA11	VIEWPOINT 5
LDA12	VIEWPOINT 6
LDA13	VIEWPOINT 7
LDA14	VIEWPOINT 8
LDA15	MAINTENANCE SPECIFICATION

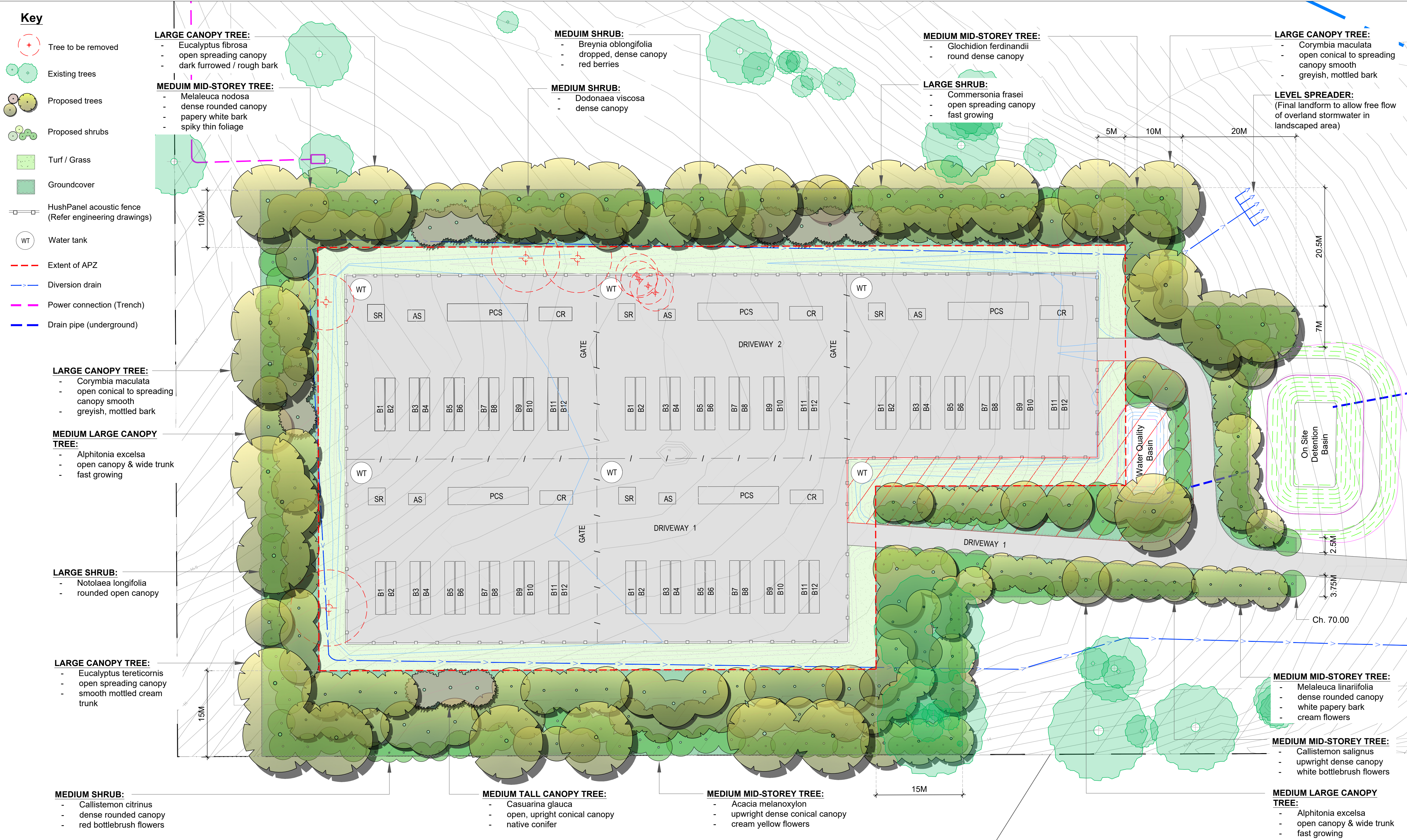
NOT FOR CONSTRUCTION

[illegible]



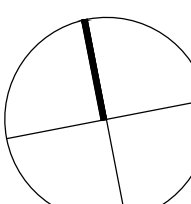


NOT FOR CONSTRUCTION

LANDSCAPE ARCHITECT:		BAR SCALE:		ASPECT:	CLIENT:	ENGINEERING AND PLANNING:		PROJECT:	TITLE:		STATUS:	
 Conus Landscape Architecture 158 Grandview Rd, New Lambton Hts, NSW 2305, p. 02 4950 9195 e. info@conuslandscapearchitecture.com.au w. conuslandscapearchitecture.com.au abn. 52 144 562 756		 Australian Institute of Landscape Architects			Hive Battery Developments Pty Ltd	HDB		Proposed Battery Energy Storage System (BESS)	SITE ANALYSIS & CONTEXT		Development Application	
1:2500 @ A1					Quintas Energy			1154 CLARENCE TOWN ROAD, SEAHAM			SCALE:	DATE:
											1:2500	22/12/23
											JOB No:	
											23.40	
											DRAWN:	CHECKED:
											DS	AC
											APPROVED:	
											AC	



NOT FOR CONSTRUCTION

LANDSCAPE ARCHITECT:		BAR SCALE:	ASPECT:	CLIENT:	ENGINEERING AND PLANNING:	PROJECT:			TITLE:			STATUS:					
<div><div></div><div><div>Conus Landscape Architecture</div><div>158 Grandview Rd, New Lambton Hts, NSW 2305.</div><div><div>p. 02 4950 9195</div><div>e. info@conuslandscapearchitecture.com.au</div><div>w. conuslandscapearchitecture.com.au</div><div>o.n. 52 144 562 756</div></div></div><div><div>Registered Landscape Architect: Anton Conus AILA No. 8420</div></div></div>		<div><div></div><div>1:300 @ A1</div></div>	<div><div></div></div>	<div><div>Hive Battery Developments Pty Ltd</div><div>Quintas Energy</div></div>	<div><div>HDB</div></div>	<div><div><div></div><div></div><div></div><div></div></div><div><div>A</div><div>22/12/2023</div><div>Final submission</div></div><div><div>REV</div><div>DATE</div><div>NOTATION/ AMENDMENT</div></div></div> <div>DO NOT SCALE DRAWINGS. CHECK ALL DIMENSIONS. FIGURED DIMENSIONS TAKE PRECEDENCE. THESE DRAWINGS ARE NOT FOR CONSTRUCTION</div>			<div><div>Proposed Battery Energy Storage System (BESS)</div><div>1154 CLARENCE TOWN ROAD, SEAHAM</div></div>			<div><div>LANDSCAPE PLAN (5 x BESS)</div></div>			<div><div>Development Application</div></div>		
						<div><div>DO NOT SCALE DRAWINGS. CHECK ALL DIMENSIONS. FIGURED DIMENSIONS TAKE PRECEDENCE. THESE DRAWINGS ARE NOT FOR CONSTRUCTION</div></div>			<div><div>ISSUE:</div><div>A</div></div>	<div><div>DWG No:</div><div>LDA02</div></div>	<div><div>PLOTTED:</div><div>1</div></div>	<div><div>SCALE:</div><div>1:200</div></div>	<div><div>DATE:</div><div>22/12/23</div></div>	<div><div>JOB No:</div><div>23.40</div></div>			
									<div><div>DRAWN:</div><div>DS</div></div>	<div><div>CHECKED:</div><div>AC</div></div>	<div><div>APPROVED:</div><div>AC</div></div>						

PLANT SCHEDULE

Botanic Name	Common Name	Size (m)	Pot Size	Spacing
Trees				
Acacia melanoxylon	Blackwood	12H x 6W	25L	As shown
Alphitonia excelsa	Red Ash	12H x 8W	25L	As shown
Callistemon salignus	White Bottlebrush	9H x 6W	25L	As shown
Casuarina glauca	Swamp Oak	12H x 6W	25L	As shown
Corymbia maculata	Spotted Gum	25H x 12W	25L	As shown
Eucalyptus fibrosa	Red Ironbark	25H x 12W	25L	As shown
Eucalyptus tereticornis	Forest Red Gum	25H x 12W	25L	As shown
Glochidion ferdinandii	Cheese Tree	9H x 8W	25L	As shown
Melaleuca linariifolia	Snow-in-Summer	7H x6W	25L	As shown
Melaleuca nodosa	Prickly Tea Tree	7H x 5W	25L	As shown
Shrubs				
Breynia oblongifolia	Breynia	2H x 2W	140mm	1.5m
Callistemon citrinus	Crimson Bottlebrush	3H x 3W	200mm	1.5m
Clerodendrum tomentosum	Lolly Bush	3.5H x 3W	200mm	1.5m
Commersonia fraseri	Brown Kurrajong	4.5H x 4.5W	200mm	2m
Dodonaea viscosa	Hop Bush	2.5H x 2W	200mm	1.5m
Notolaea longifolia	Mock Olive	4H x 3W	200mm	2m
Climbers and Groundcovers				
Lomandra longifolia	Mattrush Grass	0.8H x 1W	tube	2/m2
Microlaena stipoides var. stipoides	Weeping Meadow Grass	1H x 1W	tube	4/m2

NOTES:

1. All garden beds to contain premium imported garden mix with 5% organics mixed with site soil
2. Provide slow-release fertiliser to each plant to manufacturer's instructions
3. All garden beds to contain 80mm depth native hardwood chip mulch, similar to ANL 'Forest Fines'
4. All trees to be staked by 1800 x 50 x 50mm hardwood timber stakes fastened with hessian ties
5. All trees to comply with NATSPEC specifications
6. All turf to be Couch on 50mm premium topdress
7. All garden edges to be H4 treated pine



Acacia melanoxylon



Alphitonia excelsa



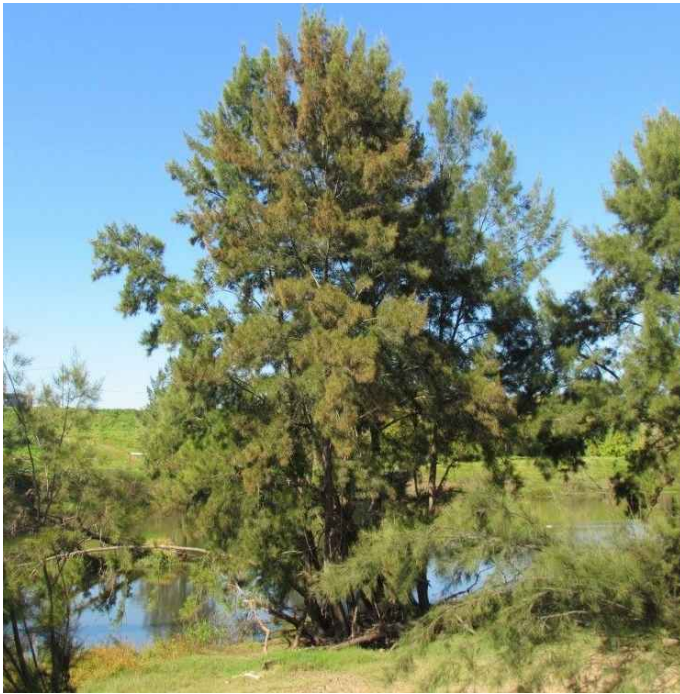
Breynia oblongifolia



Callistemon salignus



Callistemon citrinus



Casuarina glauca



Clerodendrum tomentosum



Commersonia fraseri



Corymbia maculata



Dodonaea viscosa



Eucalyptus fibrosa



Eucalyptus tereticornis



Glochidion ferdinandii



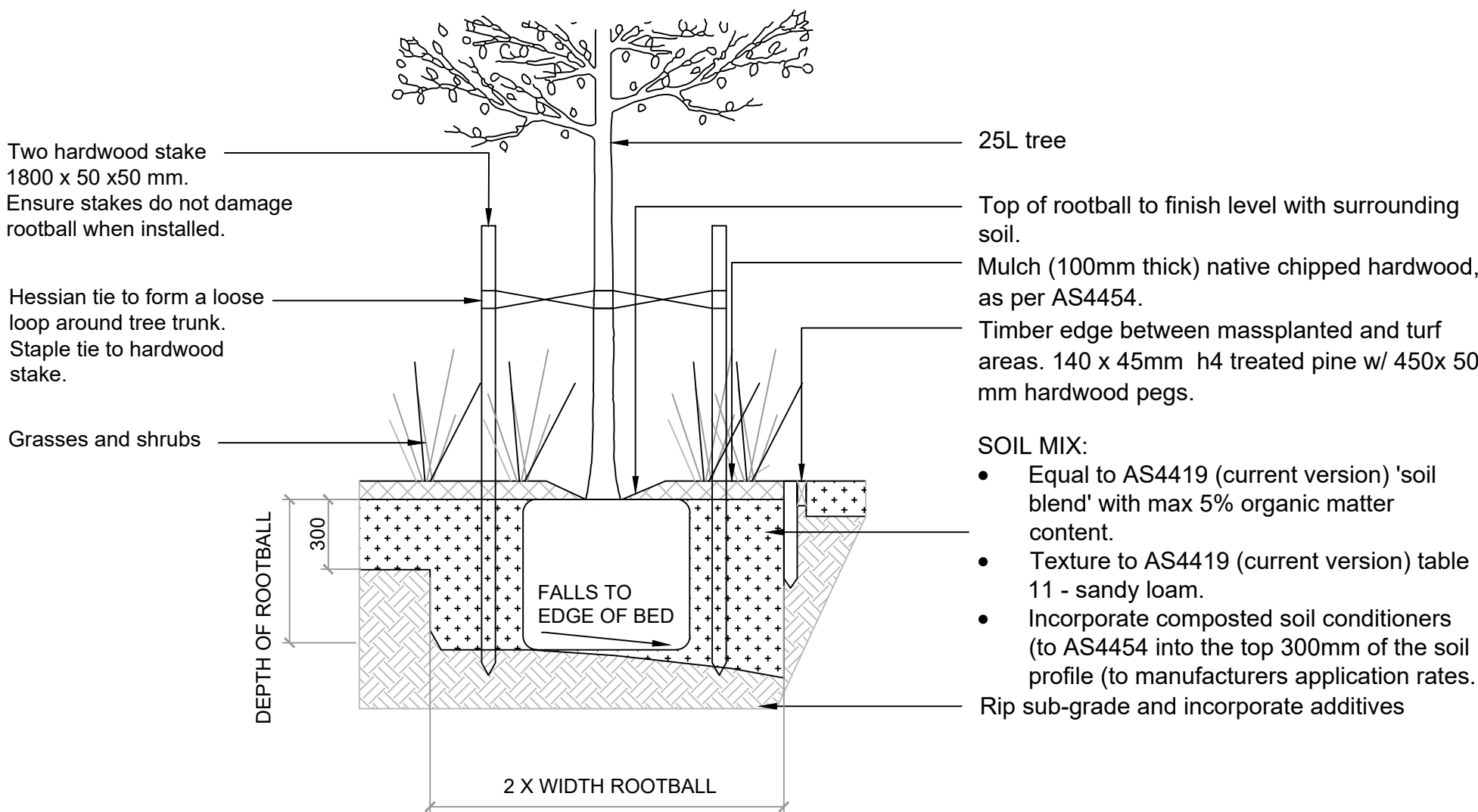
Melaleuca linariifolia



Melaleuca nodosa





Notolaea longifolia




01 TREE DETAIL 1:25
04 25L TREE IN MASS PLANTING - GENERAL

NOT FOR CONSTRUCTION

LANDSCAPE ARCHITECT:	BAR SCALE:	ASPECT:	CLIENT:	ENGINEERING AND PLANNING:	PROJECT:	TITLE:	STATUS:
<div>Conus Landscape Architecture 158 Grandview Rd, New Lambton Hts, NSW 2305. p. 02 4950 9195 e. info@conuslandscapearchitecture.com.au w. conuslandscapearchitecture.com.au o. 52 144 562 756</div> <div>Registered Landscape Architect: Anton Conus AILA No. 8420</div>	<div>Australian Institute of Landscape Architects</div>		Hive Battery Developments Pty Ltd	HDB	Proposed Battery Energy Storage System (BESS) 1154 CLARENCE TOWN ROAD, SEAHAM	PLANT SCHEDULE & DETAIL	Development Application
							SCALE: DATE: JOB No:
							AS INDICATED 22/12/23 23.40
					ISSUE: DWG No: PLOTTED:	DRAWN: CHECKED: APPROVED:	
					A LDA03 1	DS AC AC	






NOT FOR CONSTRUCTION

LANDSCAPE ARCHITECT:		BAR SCALE:		ASPECT:	CLIENT:	ENGINEERING AND PLANNING:			PROJECT:			TITLE:			STATUS:		
<div><div><div></div><div>conus</div><div>LANDSCAPE ARCHITECTURE</div></div><div><div>Conus Landscape Architecture</div><div>158 Grandview Rd, New Lambton Hts, NSW 2305,</div><div>p. 02 4950 9195</div><div>e. info@conuslandscapearchitecture.com.au</div><div>w. conuslandscapearchitecture.com.au</div><div>abn. 52 144 562 756</div></div></div> <div><div><div></div><div>Australian Institute of Landscape Architects</div></div></div> <div><div>Registered Landscape Architect: Anton Conus AILA No. 8420</div></div>		 <div>1:250 @ A1</div>			<div>Hive Battery Developments Pty Ltd</div> <div>Quintas Energy</div>	HDB			<div>Proposed Battery Energy Storage System (BESS)</div> <div>1154 CLARENCE TOWN ROAD, SEAHAM</div>			<div>ELEVATION (SOUTHERN)</div> <div>- PLANTING AT 1 & 5 YEARS</div>			Development Application		
															SCALE:		
															1:250		
															DATE:		
															22/12/23		
															JOB No:		
															23.40		
															DRAWN:		
															DS		
															CHECKED:		
															AC		
															APPROVED:		
															AC		
															ISSUE:		
															A		
															DWG No:		
															LDA04		
															PLOTTED:		
															1		



NOT FOR CONSTRUCTION

LANDSCAPE ARCHITECT:			BAR SCALE:			ASPECT:			CLIENT:			ENGINEERING AND PLANNING:			PROJECT:			TITLE:			STATUS:						
<div><p>Conus Landscape Architecture 158 Grandview Rd, New Lambton Hts, NSW 2305.</p><p>p. 02 4950 9195 e. info@conuslandscapearchitecture.com.au conuslandscapearchitecture.com.au w. abn. 52 144 562 756</p></div> <div><p>Australian Institute of Landscape Architects</p></div> <div><p>0 5 10 20M</p><p>1:250 @ A1</p></div> <div><p>Hive Battery Developments Pty Ltd</p><p>Quintas Energy</p></div> <td colspan="3" rowspan="5"><p>HDB</p></td> <td colspan="3" rowspan="5"><p>Proposed Battery Energy Storage System (BESS)</p><p>1154 CLARENCE TOWN ROAD, SEAHAM</p></td> <td colspan="3" rowspan="5"><p>ELEVATION (EASTERN) - PLANTING AT 1 & 5 YEARS</p></td> <td colspan="3" rowspan="5"><p>Development Application</p><table><tr><td>SCALE:</td><td>DATE:</td><td>JOB No:</td></tr><tr><td>1:250</td><td>22/12/23</td><td>23.40</td></tr></table></td>			<p>HDB</p>			<p>Proposed Battery Energy Storage System (BESS)</p> <p>1154 CLARENCE TOWN ROAD, SEAHAM</p>			<p>ELEVATION (EASTERN) - PLANTING AT 1 & 5 YEARS</p>			<p>Development Application</p> <table><tr><td>SCALE:</td><td>DATE:</td><td>JOB No:</td></tr><tr><td>1:250</td><td>22/12/23</td><td>23.40</td></tr></table>			SCALE:	DATE:	JOB No:	1:250	22/12/23	23.40							
															SCALE:	DATE:	JOB No:										
															1:250	22/12/23	23.40										
															ISSUE:			DWG No:		PLOTTED:		DRAWN:		CHECKED:		APPROVED:	
															A			LDA05		1		DS		AC		AC	
DO NOT SCALE DRAWINGS. CHECK ALL DIMENSIONS. FIGURED DIMENSIONS TAKE PRECEDENCE. THESE DRAWINGS ARE NOT FOR CONSTRUCTION																											



01 ELEVATION A (SOUTHERN) 1:250
06 - PLANTING MATURITY



02 ELEVATION D (EASTERN) 1:250
06 - PLANTING MATURITY

NOT FOR CONSTRUCTION

LANDSCAPE ARCHITECT:		BAR SCALE:	ASPECT:	CLIENT:	ENGINEERING AND PLANNING:	PROJECT:			TITLE:			STATUS:					
<div><div><div></div><div>conus</div><div>LANDSCAPE ARCHITECTURE</div></div><div>Conus Landscape Architecture 158 Grandview Rd, New Lambton Hts, NSW 2305. p. 02 4950 9195 e. info@conuslandscapearchitecture.com.au w. conuslandscapearchitecture.com.au abn. 52 144 562 756</div><div>Australian Institute of Landscape Architects</div></div> <div>Registered Landscape Architect: Anton Conus AILA No. 8420</div>		<div><div><div>0</div><div>5</div><div>10</div><div>20M</div></div><div>1:250 @ A1</div></div>		<div>Hive Battery Developments Pty Ltd</div> <div>Quintas Energy</div>		<div>HDB</div>			<div>Proposed Battery Energy Storage System (BESS)</div> <div>1154 CLARENCE TOWN ROAD, SEAHAM</div>			<div>ELEVATION (SOUTHERN & EASTERN) - PLANTING MATURITY</div>			Development Application		
															SCALE: DATE: JOB No:		
															1:250 22/12/23 23.40		
															DRAWN: CHECKED: APPROVED:		
A		22/12/2023	Final submission	DO NOT SCALE DRAWINGS. CHECK ALL DIMENSIONS. FIGURED DIMENSIONS TAKE PRECEDENCE. THESE DRAWINGS ARE NOT FOR CONSTRUCTION			ISSUE: DWG No: PLOTTED:			DS AC AC							
REV DATE NOTATION/ AMENDMENT					A LDA06 1												



NOT FOR CONSTRUCTION

[illegible]



LOCATION MAP (NOT TO SCALE)



01
09 VIEWPOINT 3 NTS





01
09 VIEWPOINT 3 (PLANTING MATURITY) NTS

NOT FOR CONSTRUCTION

LANDSCAPE ARCHITECT:		BAR SCALE:	ASPECT:	CLIENT:	ENGINEERING AND PLANNING:	PROJECT:			TITLE:			STATUS:		
<div><div><div></div></div><div><div>Conus Landscape Architecture</div><div>158 Grandview Rd, New Lambton Hts, NSW 2305,</div><div><div>p. 02 4950 9195</div><div>e. info@conuslandscapearchitecture.com.au</div><div>w. conuslandscapearchitecture.com.au</div><div>abn. 52 144 562 756</div></div></div><div><div>Australian Institute of Landscape Architects</div></div></div>		<div><div>Hive Battery Developments Pty Ltd</div><div>Quintas Energy</div></div>		<div><div>HDB</div></div>		<div><div>Proposed Battery Energy Storage System (BESS)</div><div>1154 CLARENCE TOWN ROAD, SEAHAM</div></div>			<div><div>VIEWPOINT 3</div></div>			<div><div>Development Application</div></div>		
												SCALE:	DATE:	JOB No:
												-	22/12/23	23.40
												ISSUE:	DWG No:	PLOTTED:
Registered Landscape Architect: Anton Conus AILA No. 8420						DO NOT SCALE DRAWINGS. CHECK ALL DIMENSIONS. FIGURED DIMENSIONS TAKE PRECEDENCE. THESE DRAWINGS ARE NOT FOR CONSTRUCTION						A	LDA09	1
												DS	AC	AC



NOT FOR CONSTRUCTION

LANDSCAPE ARCHITECT:			BAR SCALE:		ASPECT:		CLIENT:		ENGINEERING AND PLANNING:				PROJECT:	TITLE:			STATUS:		
<div><p>Conus Landscape Architecture 158 Grandview Rd, New Lambton Hills, NSW 2305.</p><p>p. 02 4950 9195 e. info@conuslandscapearchitecture.com.au w. conuslandscapearchitecture.com.au abn. 52 144 562 756</p><p>Registered Landscape Architect: Anton Conus AILA No. 8420</p></div>		<div><p>Australian Institute of Landscape Architects</p></div>		Hive Battery Developments Pty Ltd	HDB							Proposed Battery Energy Storage System (BESS)	VIEWPOINT 4			Development Application			
				A		22/12/2023	Final submission												
				REV		DATE	NOTATION/ AMENDMENT												
				DO NOT SCALE DRAWINGS. CHECK ALL DIMENSIONS. FIGURED DIMENSIONS TAKE PRECEDENCE. THESE DRAWINGS ARE NOT FOR CONSTRUCTION															
												ISSUE:	DWG No:	PLOTTED:	DRAWN:	CHECKED:	APPROVED:		
												A	LDA10	1	DS	AC	AC		





NOT FOR CONSTRUCTION

[illegible]



NOT FOR CONSTRUCTION

LANDSCAPE ARCHITECT:		BAR SCALE:	ASPECT:	CLIENT:	ENGINEERING AND PLANNING:	PROJECT:			TITLE:			STATUS:		
<div><p>Conus Landscape Architecture 158 Grandview Rd, New Lambton Hts, NSW 2305.</p><p>p. 02 4950 9195 e. info@conuslandscapearchitecture.com.au w. conuslandscapearchitecture.com.au o/n. 52 144 562 756</p><p>Registered Landscape Architect: Anton Conus AILA No. 8420</p></div> <div><p>Australian Institute of Landscape Architects</p></div>				Hive Battery Developments Pty Ltd	HDB				Proposed Battery Energy Storage System (BESS)	VIEWPOINT 6	Development Application			
											SCALE:	DATE:	JOB No:	
											-	22/12/23	23.40	
						DO NOT SCALE DRAWINGS. CHECK ALL DIMENSIONS. FIGURED DIMENSIONS TAKE PRECEDENCE. THESE DRAWINGS ARE NOT FOR CONSTRUCTION								
						ISSUE:	DWG No:	PLOTTED:	DRAWN:	CHECKED:	APPROVED:			
						A	LDA12	1	DS	AC	AC			



LOCATION MAP (NOT TO SCALE)



01
13 VIEWPOINT 7 NTS



01
13 VIEWPOINT 7 (PLANTING MATURITY) NTS

NOT FOR CONSTRUCTION

LANDSCAPE ARCHITECT:		BAR SCALE:	ASPECT:	CLIENT:	ENGINEERING AND PLANNING:	PROJECT:			TITLE:			STATUS:		
<div><div><div></div></div><div><div>Conus Landscape Architecture</div><div>158 Grandview Rd, New Lambton Hts, NSW 2305.</div><div><div>p.</div><div>02 4950 9195</div></div><div><div>e.</div><div>info@conuslandscapearchitecture.com.au</div></div><div><div>w.</div><div>conuslandscapearchitecture.com.au</div></div><div><div>abn.</div><div>52 144 562 756</div></div></div><div><div>Australian Institute of Landscape Architects</div></div></div>		<div><div>Hive Battery Developments Pty Ltd</div><div>Quintas Energy</div></div>		<div><div>HDB</div></div>		<div><div>Proposed Battery Energy Storage System (BESS)</div><div>1154 CLARENCE TOWN ROAD, SEAHAM</div></div>			<div><div>VIEWPOINT 7</div></div>			<div><div>Development Application</div><div><div>SCALE:</div><div>DATE:</div><div>JOB No:</div></div><div><div>-</div><div>22/12/23</div><div>23.40</div></div><div><div>DRAWN:</div><div>CHECKED:</div><div>APPROVED:</div></div><div><div>DS</div><div>AC</div><div>AC</div></div></div>		
Registered Landscape Architect: Anton Conus AILA No. 8420						DO NOT SCALE DRAWINGS. CHECK ALL DIMENSIONS. FIGURED DIMENSIONS TAKE PRECEDENCE. THESE DRAWINGS ARE NOT FOR CONSTRUCTION			ISSUE:			DRAWN:		
									A			DS		
									LDA13			AC		
									1			AC		



LOCATION MAP (NOT TO SCALE)



01
14 VIEWPOINT 8 NTS



01
14 VIEWPOINT 8 (PLANTING MATURITY) NTS

NOT FOR CONSTRUCTION

LANDSCAPE ARCHITECT:			BAR SCALE:		ASPECT:		CLIENT:		ENGINEERING AND PLANNING:			PROJECT:	TITLE:			STATUS:																																																																																																																																																																																																																																																																																																																																																																																																																																																																																																																																																																																																																																																																																																																																																																																																																																																																																																																																																																																																																																																																																																																																																																																																																																																																																																																																		
<div><div><div></div></div><div><div>Conus Landscape Architecture</div><div>158 Grandview Rd, New Lambton Hts, NSW 2305.</div><div><div>p.</div><div>02 4950 9195</div></div><div><div>e.</div><div>info@conuslandscapearchitecture.com.au</div></div><div><div>w.</div><div>conuslandscapearchitecture.com.au</div></div><div><div>abn.</div><div>52 144 562 756</div></div></div><div><div>Australian Institute of Landscape Architects</div></div></div> <div><div>Hive Battery Developments Pty Ltd</div><div>Quintas Energy</div></div> <div><div>HDB</div></div> <div><div>A</div><div>22/12/2023</div><div>Final submission</div></div> <div><div>REV</div><div>DATE</div><div>NOTATION/ AMENDMENT</div></div> <div><div>DO NOT SCALE DRAWINGS. CHECK ALL DIMENSIONS. FIGURED DIMENSIONS TAKE PRECEDENCE. THESE DRAWINGS ARE NOT FOR CONSTRUCTION</div></div>																																																																																																																																																																																																																																																																																																																																																																																																																																																																																																																																																																																																																																																																																																																																																																																																																																																																																																																																																																																																																																																																																																																																																																																																																																																																																																																																																		</

MAINTENANCE SPECIFICATION (52 weeks Plant Establishment Period)

Maintenance of the proposed development will be in accordance with "Port Stephens Council's DCP, 2014".

1. GENERAL

The Contractor will be responsible for maintaining all areas within private property as follows:

- All initial planting should be healthy, pest and disease free.
- All plants should be monitored for pests and diseases every three days for the first four weeks and then every three months. Plants effected badly by pests and diseases should be removed, disposed of off site and replaced.
- Young seedlings are desirable to some species such as rabbits, hares and macropods and if they are considered a problem, plastic tree guards should be used around each plant or reinstated where removed.
- Biological controls are the preferred treatment for pests and diseases. Any chemicals used for pest and disease control must be registered for use in aquatic situations by the National Registration Authority, as indicated on the label.
- Treatment of pests and diseases should be conducted at the same time to avoid reinfestation from adjacent areas.
- Grassed areas will be mowed and landscape beds mulched. Any damage done to nature strip shall be repaired including replacement of street trees and restoration of grassed areas as required.
- Mowing will be kept to a blade height of 30mm-70mm and frequency will be in accordance with the seasons. All edges will be trimmed with a whipper-snipp as frequently as mowing is required.
- Mowing will vary seasonally. Once in a three week cycle is adequate within most months other than 'deep summer' and 'deep winter' environmental conditions.
- Fertiliser shall be applied to manufacturer's requirements.
- Weeding maintenance should be monitored and completed when periodically.
- Weeds will be effectively controlled by the use of mulching and densely planting groundcovers to combat invasion. Where necessary herbicides may be used to control weed infestation.
- Plants will be checked for pest and diseases regularly, any pesticides used will be broad range and have low toxicity.
- Prune as required only. Prune in accordance with Ross Clark's 'Nat Spec'.
- Plant replacement – dead and dying plants should be replaced immediately by the Landscape Contractor; vandalised plants should be replaced to a maximum of two times by the Landscape Contractor. Thereafter, plants replaced should be at the client's expense. All trees to be replaced to be accordance with Ross Clark's 'NatSpec'.
- Stakes and ties of trees to be removed at the end of 52 week
- Using an irrigation system connected to an outside water tank, turf and planting areas to be watered three times per week within the first month, then twice weekly for the next two months. Thereafter, taper to once per month to harden site conditions whilst allowing the maximum root growth within the initial quarter.
- Watering frequency will vary according to season and weather variations. Council's water restriction policy must be adhered to at all times.
- A Maintenance Log is to be kept by the contractor and shown to the Landscape Architect upon request.

2. TREES AND SHRUBS

2.1 New trees - first 2 months following planting

- Monitor soil moisture as this will vary depending on soil and weather conditions.
- As a general guide, water each tree with 10 litres of water three times in the first two weeks, then once per week and 5 litres of water for each shrub.
- Maintain stakes and tree guards (if applicable) vertically and replace immediately if broken.
- Remove encroaching grasses and weeds from the mulched area using herbicides at label rates, or by hand removal.
- Inspect foliage, branches and trunk for any indications of pest and disease infestations. Control where necessary.
- Replenish mulch to retain an even 75mm depth.
- Replace failed trees immediately.


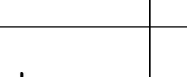
2.2 New trees - from 2-12 months following planting

- Inspect trees and shrubs monthly and water at 10 litres per tree, 5 litres per shrub if required.
- Retain mulch at 75mm depth at all times.
- Remove hessian ties if trees are self-supporting after six months, or re-tie as needed.
- All stakes must be removed by the end of the maintenance period and disposed of in a responsible manner.
- Retain hardwood stakes as markers for the twelve month period.
- Keep the mulched area free of grasses and weeds at all times.
- Inspect foliage, branches and trunk for any indications of pest and disease infestations. Control where necessary.
- After six months, lightly prune trees which need branch direction or branch removal to permit traffic access or pedestrian access. Do not top or lop any tree. Carry out formative pruning to remove any low branches and encourage a clear stem.
- Replace any tree which is dead or in irreversible decline.
- Twelve months after planting, fertilise trees with slow release fertiliser at manufacturer's recommended rates.

2.3 Maintenance of established trees and shrubs

- Inspect trees at six monthly intervals in the second and third year of growth.
- Retain mulch at 75mm depth during this period.
- Remove ties and stakes if trees are self-supporting or re-tie if still needed.
- Remove grass and weeds from mulched area.
- Inspect foliage, branches and trunk for any indications of pest and disease infestations. Control where necessary.
- Prune trees which need directional branch pruning to produce one main trunk to allow pedestrian and traffic access.
- Replace any tree which is dead or in irreversible decline.
- For the first three years after planting, fertilise trees annually with slow release fertiliser at manufacturers recommended rates.
- After trees have been growing for at least three years and have established well and are flourishing, inspection should be made at least annually. Any necessary pruning or tree surgery should be carried out as required to maintain healthy growth.
- When mature trees have been removed, the stump is to be ground out and the areas around made good. Position trees in the area adjacent to the existing tree, or consult Council's Landscape Architect for an alternative location.

NOT FOR CONSTRUCTION

LANDSCAPE ARCHITECT:			BAR SCALE:			ASPECT:			CLIENT:			ENGINEERING AND PLANNING:			PROJECT:			TITLE:			STATUS:														
<div><div><div>Conus Landscape Architecture 158 Grandview Rd, New Lambton Hts, NSW 2305. p. 02 4950 9195 e. info@conuslandscapearchitecture.com.au w. conuslandscapearchitecture.com.au abn. 52 144 562 756</div></div><div>Registered Landscape Architect: Anton Conus AILA No. 8420</div></div>			<div><div></div><div>Australian Institute of Landscape Architects</div></div>						Hive Battery Developments Pty Ltd			HDB			Proposed Battery Energy Storage System (BESS)			MAINTENANCE SPECIFICATION			Development Application														
																		SCALE:			DATE:			JOB No:											
																		-			22/12/23			23.40											
																		ISSUE:			DWG No:			PLOTTED:			DRAWN:			CHECKED:			APPROVED:		
																		A			LDA15			1			DS			AC			AC		